

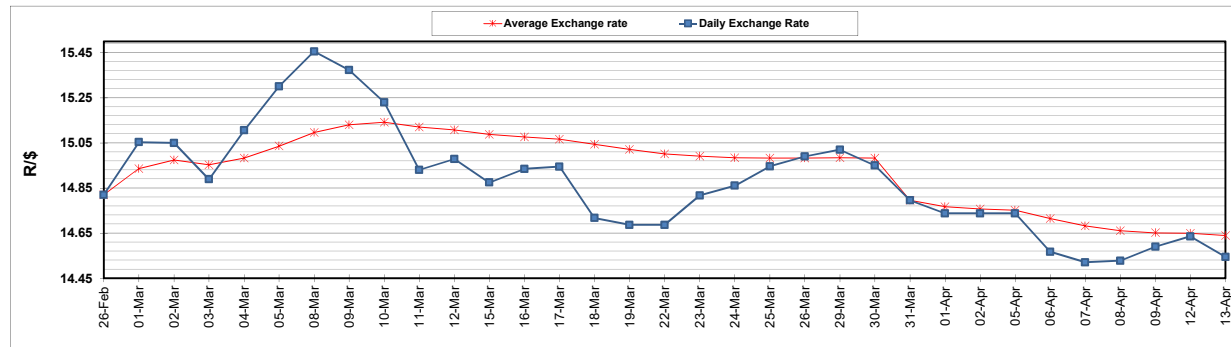
	PETROL 95 ULP	PETROL 93 ULP & LRP	DIESEL 0.05%	DIESEL 0.005%	ILL. PAR.
GAUTENG PUMP PRICE (SA c/l) AS FROM 07/04/2021	1,732.000	1,710.000	-	-	-
WHOLESALE PRICE (SA c/l) AS FROM 07/04/2021	-	-	1,477.620	1,480.020	880.488
SINGLE NATIONAL MAXIMUM RETAIL PRICE	-	-	-	-	1,106.000
BASIC FUEL PRICE - 13/04/2021 (SA c/l)	705.687	692.038	644.572	648.472	627.001
PRESS RELEASE CONTRIBUTION TO BFP 07/04/2021 - 13/04/2021 (SA c/l)	736.170	724.170	690.630	693.030	667.128
UNIT OVER/(UNDER) RECOVERY - 13/04/2021 (SA c/l)	30.483	32.132	46.058	44.558	40.127
AVERAGE BASIC FUEL PRICE 31/03/2021 - 13/04/2021	709.218	694.684	640.738	643.472	623.192
AVERAGE UNIT OVER/(UNDER) RECOVERY 31/03/2021 - 13/04/2021	(8.548)	(3.514)	31.392	32.058	26.936

ANALYSIS MOVEMENT OF AVERAGE OVER/(UNDER) RECOVERY

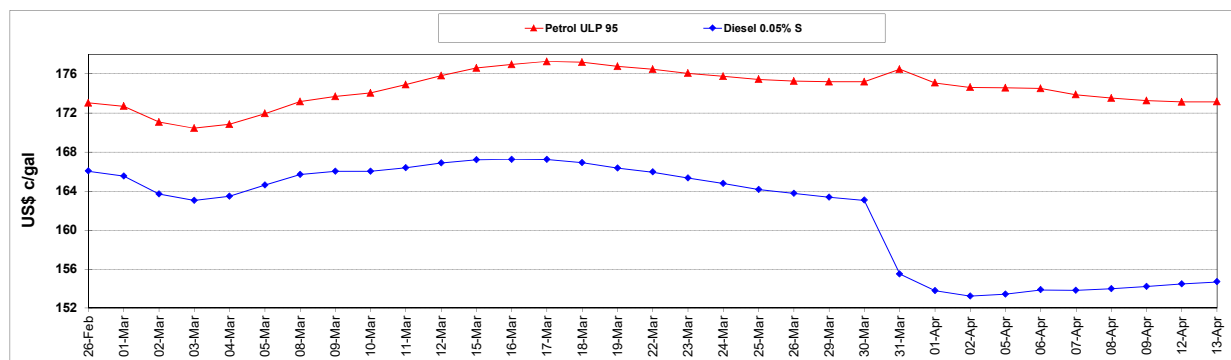
	PETROL 95	PETROL 93	DIESEL 0.05%	DIESEL 0.005%	ILL. PAR.
- MOVEMENT IN INTERNATIONAL PRODUCT PRICES	(25.194)	(19.819)	16.353	16.955	12.309
- MOVEMENT IN EXCHANGE RATE	16.646	16.305	15.039	15.103	14.627
AVERAGE UNIT OVER/(UNDER) RECOVERY 31/03/2021 - 13/04/2021	(8.548)	(3.514)	31.392	32.058	26.936

R/\$ EXCHANGE RATE - (R/\$14.5450 - 13/04/2021)

EXCHANGE RATE USED IN BASIC FUEL PRICE



INTERNATIONAL PRODUCT PRICES OF BASKET USED IN BASIC FUEL PRICE



BASIC FUEL PRICE IN SA CENTS PER LITRE

